



# The Pin Oak

*"Giving Nature a Helping Hand"*

Issue 15

www.fomep.com

April 2013

## *Earth Day 2013 & Native Plant Sale*

*Saturday, April 20, 2013*

*Time: 8 am to 1 pm*

*Location: Malcolmson Eco-Park*

*The Friends of Malcolmson Eco-Park will be celebrating Earth Day on Saturday, April 20 from 8:00 a.m. to 1:00 p.m. Earth Day at Malcolmson Eco-Park is an annual tradition in St. Catharines. We need volunteers, so please mark this date on your calendar. We will also be having our Annual Native Plant Sale to raise money for park projects. A second plant sale will be held on Saturday May 4<sup>th</sup>. We hope to see you there!*

*2nd Native Plant Sale: Saturday, May 4, 2013*

*Time: 8 am to 1 pm*

### News

Hello Friends! It is that busy time of year again at the park. The Friends Advisory Committee has been working hard these last 3 months to organize the annual Earth Day and Native Plant Sale at the park. This is a very important event and we hope that you can participate.

2013 did bring some sad news as Frank Hardy resigned from the Advisory Committee. Frank is very knowledgeable about native trees/shrubs and native bees. He has written a few articles for the Pin Oak and if you look carefully in the Tall Grass Prairie you will find his bee boxes. Read Pin Oak Issue 11 for more information on native bees. Thanks Frank for all of your work on the Advisory Committee!

On the flip side, we did gain a new Advisory Committee member. He is Chris Semenchuk and he brings to the group a solid background on native species and has extensive horticultural experience. Welcome Chris!

If you've had an opportunity to walk through the park this winter you would have noticed a lot of activity around the St. Lawrence Seaway Authority Range Tower. We are happy to report the Seaway Authority has been very accommodating and has installed a new tower (**Figure 1**). This is significantly higher than the previous tower and will mean less impact to the trees within the park. We would like to thank the Seaway Authority and the City of St. Catharines for facilitating a positive outcome to this project.



*Figure 1: New Range Tower March 2013*

### News Continued

Visitors to the park in mid-April will have noticed that the Friends, in partnership with the City of St. Catharines and the St. Catharines Fire Department, conducted a successful burn in the Tall Grass Prairie Area of Malcolmson Eco-Park (Figure 2). This area requires burning in order for certain rare native grasses and wild flowers to thrive.

We also have other exciting plans for 2013 thanks to the generous support of TD Friends of the Environment. Thank you!

### The Northwest Entrance at Lombardy Street

Since the Waterfront Trail enters the park here, the path is well used. This year the path will be raised with new gravel, to smooth out the dip over the culvert. It will also be widened to improve access for City vehicles that are doing work in the park. A garden with wildflowers and shrubs will be planted on the Lombardy St. side of the fence to help beautify the entrance. Along the path, more wildflowers and shrubs will be planted. In the future, we hope to erect an interpretive sign with map and species to watch for as you walk through the park.

### The Amphibian Wetland

This is a swampy area south of the first east-west cross trail, between the trail and the fenced compound. In the spring and summer you can hear frogs singing and enjoy the sight of Blue Flag Iris, then later, pink Swamp Rose Mallows. The presence of frogs is an indicator of a healthy wetland. On Earth Day, we will be planting wetland wildflowers, like Joe Pye Weed and Swamp Milkweed, around the water's edge. Native shrubs like Buttonbush and Black Gum will be planted a bit in from the edge, for habitat and food. Later this year, the Friends will improve the viewing area for the Wetland, by creating a level graveled space next to the path, and adding armor stone seats. An interpretive sign explaining wetland species will be erected.

### Forest Replanting

In the winter of 2012, some of our members cleared an area north of the first cross trail, and east of the trail that heads north from the cross trail. They cut out European Buckthorn, Bittersweet vine, and Wild Grape vine, which are all invasive species. On Earth Day this year, volunteers will begin replanting here with native trees like Canadian Hemlock and Blue Beech, and with native shrubs like Black Chokeberry and Wild Raisin. Cutting of the invasive species will continue over several years to prevent their regrowth.

We invite everyone with interest and energy, to join us on Earth Day to help out with these projects!



Figure 2: Controlled Burn in Tall Grass Prairie in April



### Swamp Rose Mallow (*Hibiscus moscheutos*)

This beautiful plant is found in the Amphibian Wetland Area of Malcolmson Eco-Park. It is a species of Special Concern provincially and nationally. This plant produces huge, pink flowers in summer that are arranged up tall stems like the familiar hollyhocks found in your neighbourhood gardens. Each flower opens for one or two days, and fades as soon as it is pollinated. The seeds have a tough coat, float readily, and are eaten by ducks. A colonizing species, plants can form dense stands in shallow, open water. The species range is eastern North America from the lower Great Lakes region south to Florida and west to the Mississippi River. Keep an eye out this summer for the Swamp Rose Mallow.

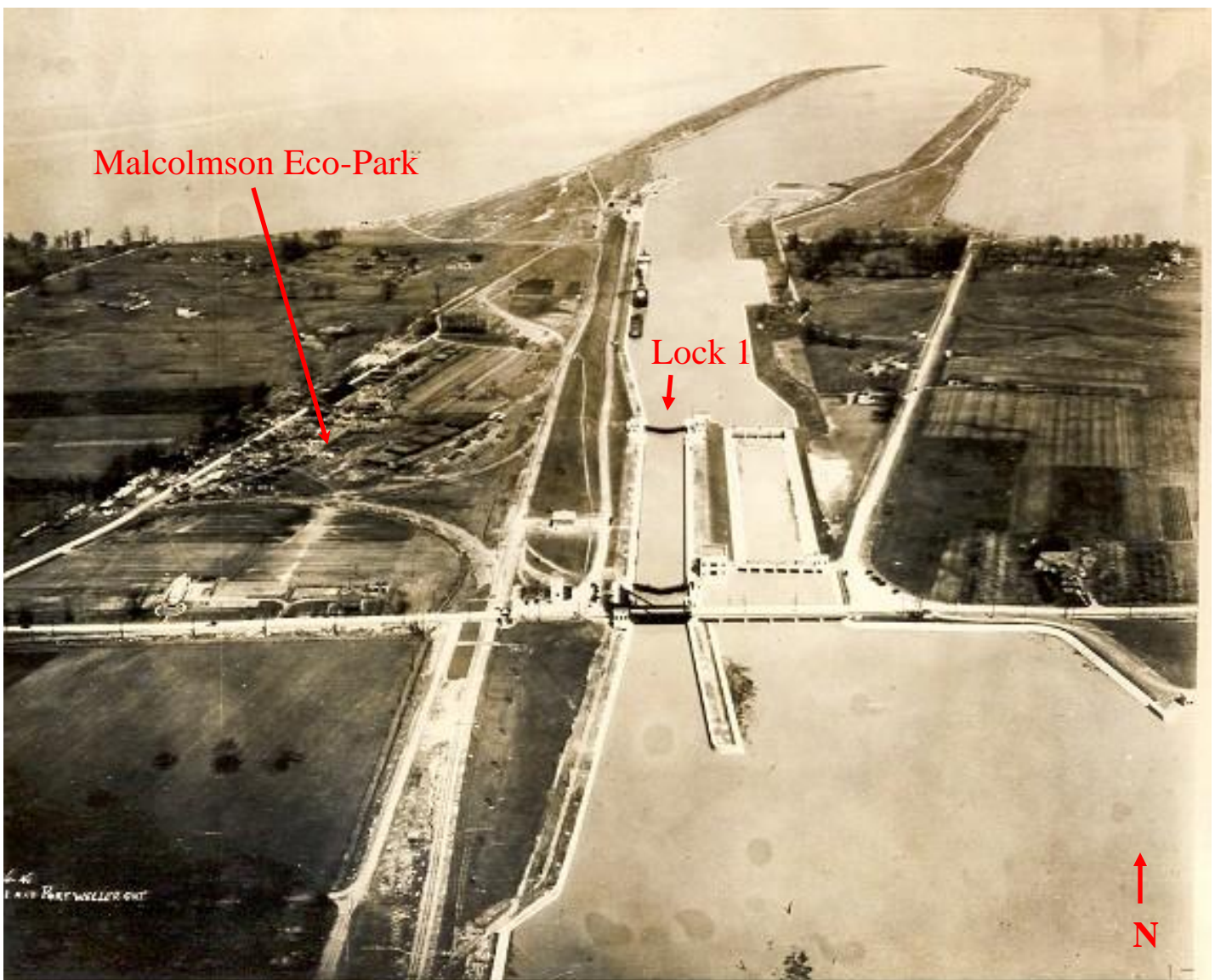
## Native Plant Sale

*The Native Plant Sale is being held on Saturday, April 20<sup>th</sup> and Saturday, May 4<sup>th</sup> at the Malcolmson Eco-Park compound from 8:00 am - 1:00 pm. Below is a tentative list of native wildflowers, shrubs and trees that will be available for sale. The list is subject to change depending on availability. Generally, wildflowers will be available in 10-cm pots and trees will be available in 4-litre pots. Please contact Josh Diamond if you require further information.*

Trees and Shrubs	Wildflowers and Grasses	Wildflowers and Grasses
Bush Honeysuckle	Jack-in-the Pulpit	Ironweed
Spicebush	White Baneberry	Hairy Beard Tongue
Fragrant Sumac	Red Baneberry	Pokeweed
Black Currant	Yellow Giant Hyssop	Culvers Root
Eastern Redbud	Wild Garlic	Downy Yellow Violet
Smooth Wild Rose	Nodding Wild Onion	Mint
Carolina Rose	Wild Leek	Grayheaded Coneflower
Bebbs Willow	Canada Anemone	Greenheaded Coneflower
Woolly Willow	Purple Angelica	Compass Plant
Snowberry	Wild Columbine	Cup-Plant
Wild Raisin	Butterfly Weed	Tall Cinquefoil
Swamp Maple	Smooth Aster	Bloodroot
Black Maple	New England Aster	Wild Ginger
Speckled Alder	Ontario Aster	Swamp Milkweed
Yellow Birch	Sky Blue Aster	Sweet Ox-Eye
Redbud	Turtlehead	Cardinal Flower
Tulip Tree	Joe Pye-Weed	Brown-Eyed Susan
Wild Crabapple	Purple Joe-Pye Weed	Virginia Mountain Mint
Pin Cherry	White Snake Root	Foxglove Beard Tongue
Peach Leaved Willow	Flowering Spurge	Great Lobelia
American Mountain Ash	Closed Gentian	Jack-in-the Pulpit
American Bittersweet	Wild Geranium	Boneset
Virgin`s Bower	Long-Leaved Bluets	Pale Coneflower
Glaucous Honeysuckle	Pale-leaved Sunflower	Running Strawberry Vine
Moonseed	Tall Sunflower	Swamp Rose-Mallow
Chokeberry	Pale Flag Iris	Spiked Blazing Star
Button Bush	Round Headed	Michigan Lily
Winterberry Holly	Bushclover	Hoary Vervain
Ninebark	Dwarf Blazing Star	Big Blue Stem
Narrow Leaved	Michigan Lily	Little Blue Stem
Meadowsweet	False Solomon's Seal	Indian Grass
White Cedar	Starry Solomon's Seal	Bottledash Brush Grass
White Pine	Solomon Seal	Blue Vervain
Kentucky Coffee Tree	Tall Cinquefoil	Arrow Leaved Violet
Dwarf Hackberry	Hairy Mountain Mint	Woolly Blue Violet
Shagbark Hickory	Grayheaded Coneflower	Black Eyed Susan
Pussy Willow	Greenheaded Coneflower	Switch Grass
Witch Hazel	Compass Plant	
Eastern Red Cedar	Prairie Dock	
Tamarack	Stiff Goldenrod	



**Old Photo of Malcolmson Eco-Park just after the completion of the 4<sup>th</sup> Welland Canal**



**2013 Malcolmson Eco-Park: Advisory Committee**

**Mike Anderson: City of St. Catharines**

**Contact: 905-688-5601 ext. 3140**

**Greg Eckhardt: Chair**

**Doug Woodard: Tall Grass Prairie Coordinator**

**Chris Semenchuk: Committee Member**

**Sandra Johnstone: Committee Member**

**Maggie Skov: Committee Member**

**Kasia Zgurzynski: Committee Member**

**Claire Theijsmeijer: Outdoor Learning Area**

**Josh Diamond: Committee Member**

**Della Trojan: WCNA Representative**

Please consider receiving your newsletter via email (in pdf Adobe Acrobat Format). It will save on paper, postage, and your newsletter will be in colour. Also, if you would like your name removed from the mailing list, please contact **Josh Diamond** at [jkdiamond@sympatico.ca](mailto:jkdiamond@sympatico.ca).

City of St.Catharines Contact: Mike Anderson, City of St.Catharines 905-688-5601 ext. 3140